



GAT MONTHLY MEMBERSHIP PROGRESS REPORT

Results as of: 11/30/2021

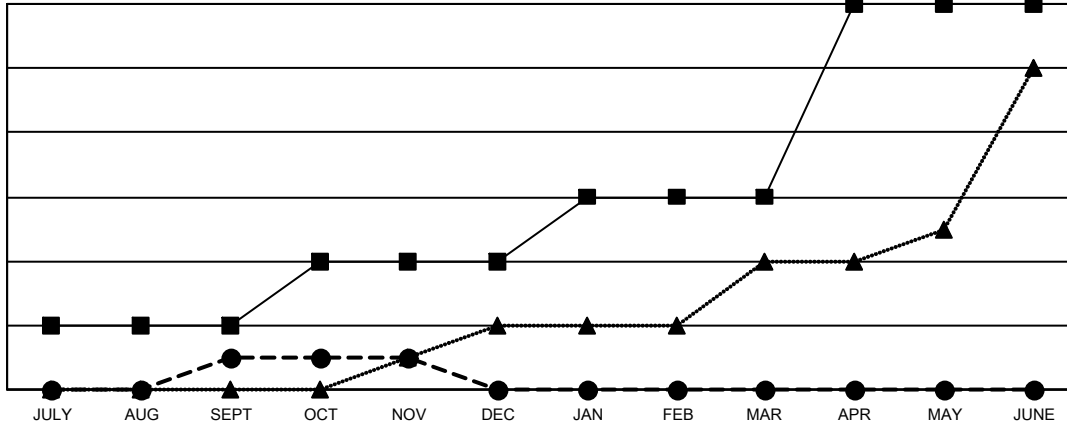
Multiple District 27

LOCATION: WISCONSIN

| Clubs | | | |
|-----------------------|---------------|-----------|---------------|
| RESULTS FOR 2021-2022 | | | |
| QUARTER | NEW CLUB GOAL | NEW CLUBS | DROPPED CLUBS |
| JULY/AUG/SEPT | 2 | 1 | 0 |
| OCT/NOV/DEC | 2 | 0 | 3 |
| JAN/FEB/MAR | 2 | 0 | 0 |
| APR/MAY/JUNE | 6 | 0 | 0 |

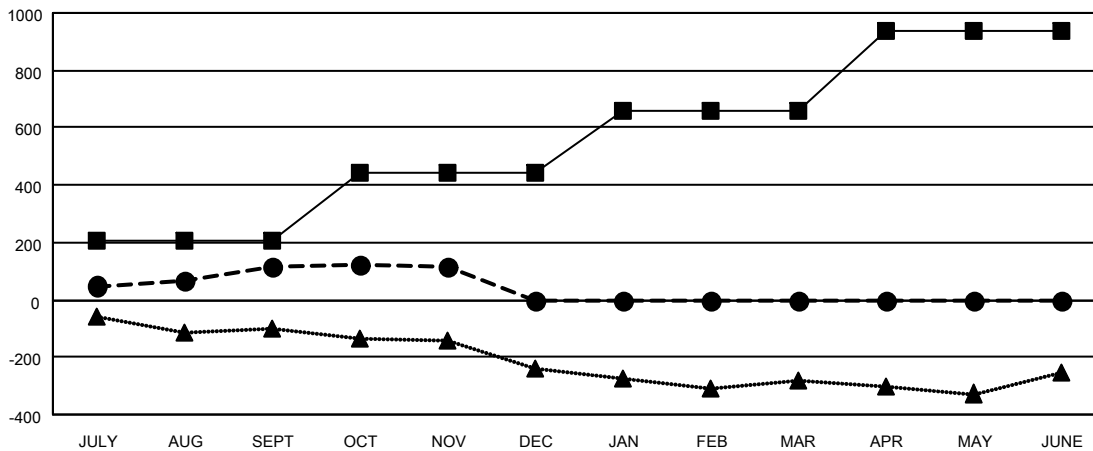
| Members | | | |
|-----------------------|------------------------|----------------------|----------------------------------------------|
| RESULTS FOR 2021-2022 | | | |
| QUARTER | MEMBER GROWTH NET GOAL | MEMBER GROWTH ACTUAL | DROPPED MEMBERS ACTUAL (including transfers) |
| JULY/AUG/SEPT | 208 | 461 | 312 |
| OCT/NOV/DEC | 235 | 292 | 252 |
| JAN/FEB/MAR | 216 | 0 | 0 |
| APR/MAY/JUNE | 281 | 0 | 0 |

GOALS AND ACTUAL NEW CLUBS CUMULATIVE



- CURRENT YEAR GOALS FOR NEW CLUBS
- CURRENT YEAR ACTUAL NEW CLUBS
- ▲- LAST YEAR ACTUAL NEW CLUBS

GOALS AND ACTUAL MEMBERS CUMULATIVE



- MEMBER GROWTH NET GOAL
- MEMBER GROWTH ACTUAL
- ▲- LAST YEAR MEMBERSHIP ACTUAL

| | |
|------------------------|------------|
| DROPPED CLUBS: 3 | |
| DROPPED MEMBERS | |
| DECEASED | 72 |
| CLUB CANCELLED | 25 |
| OTHER | 467 |
| TOTAL | 564 |

232 CLUBS OF 515 ADDED 1 OR MORE NEW MEMBERS

[CLICK HERE FOR CUMULATIVE MEMBERSHIP DATA](#)

| GENDER DISTRIBUTION | |
|----------------------------------------|-----------------|
| MALE | 12,204 (72.31%) |
| FEMALE | 4,674 (27.69%) |
| NON BINARY | 0 (0.00%) |
| PREFER NOT TO ANSWER | 0 (0.00%) |
| TOTAL FAMILY UNIT MEMBERS | 3,448 |
| FAMILY MEMBERS PAYING HALF DUES | 1,752 |